

Local Market Update – August 2012

A RESEARCH TOOL PROVIDED BY THE MINNEAPOLIS AREA ASSOCIATION OF REALTORS®



MINNEAPOLIS AREA Association
of REALTORS®

Saint Paul – West Side

- 3.3%

Change in
New Listings

+ 30.0%

Change in
Closed Sales

+ 14.7%

Change in
Median Sales Price

	August			Year to Date		
	2011	2012	+ / -	2011	2012	+ / -
New Listings	30	29	- 3.3%	202	195	- 3.5%
Closed Sales	10	13	+ 30.0%	88	116	+ 31.8%
Median Sales Price*	\$109,000	\$125,000	+ 14.7%	\$79,575	\$79,450	- 0.2%
Average Sales Price*	\$106,400	\$107,545	+ 1.1%	\$86,168	\$93,339	+ 8.3%
Price Per Square Foot*	\$73	\$75	+ 2.9%	\$62	\$65	+ 4.8%
Percent of Original List Price Received*	94.2%	97.2%	+ 3.1%	88.6%	92.9%	+ 4.8%
Days on Market Until Sale	104	106	+ 2.4%	155	115	- 25.5%
Inventory of Homes for Sale	105	79	- 24.8%	--	--	--
Months Supply of Inventory	9.8	5.2	- 47.7%	--	--	--

* Does not account for seller concessions. | Activity for one month can sometimes look extreme due to small sample size.

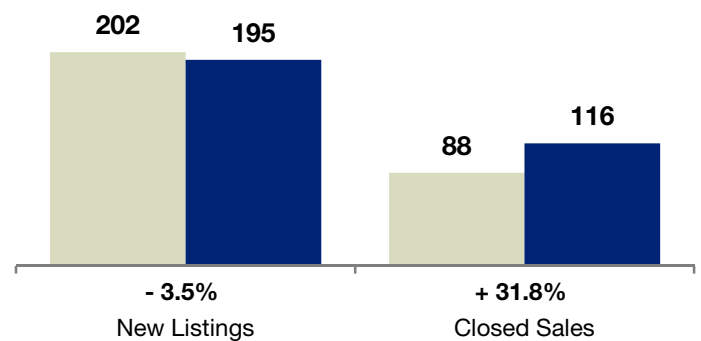
August

■ 2011 ■ 2012



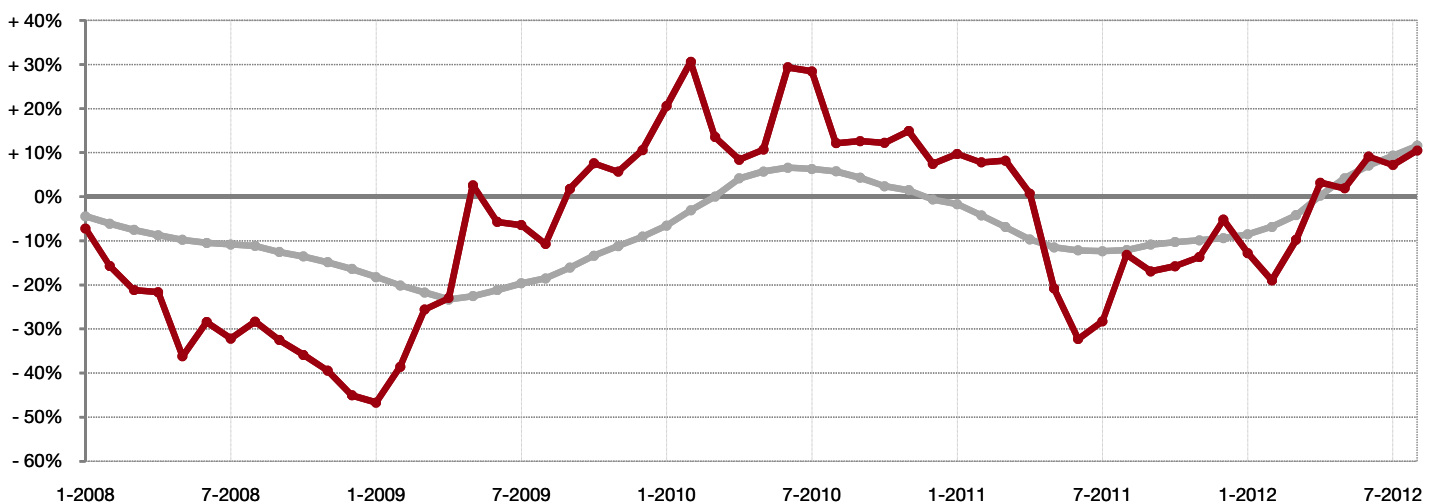
Year to Date

■ 2011 ■ 2012



Change in Median Sales Price from Prior Year (6-Month Average)**

Twin Cities Region — Grey line
Saint Paul – West Side — Red line



** Each dot represents the change in median sales price from the prior year using a 6-month weighted average. This means that each of the 6 months used in a dot are proportioned according to their share of sales during that period. | Current as of September 10, 2012. All data from Regional Multiple Listing Service, Inc. | Powered by 10K Research and Marketing. | Sponsored by Royal Credit Union www.rcu.org